

2017 STORMWATER CALENDAR

BIRMINGHAM FORWARD

MAYOR WILLIAM A. BELL, SR.
 COUNCILOR JOHNATHAN AUSTIN - PRESIDENT
 COUNCILOR STEVEN HOYT - PRESIDENT PRO TEMPORE
 COUNCILOR VALERIE ABBOTT
 COUNCILOR MARCUS LUNDY
 COUNCILOR WILLIAM PARKER
 COUNCILOR KIM RAFFERTY
 COUNCILOR JAY ROBERSON
 COUNCILOR LASHUNDA SCALES
 COUNCILOR SHEILA TYSON

JEFFERSON COUNTY COMMISSION
 JAMES A. "JIMMIE" STEPHENS - PRESIDENT
 SANDRA LITTLE BROWN - PRESIDENT PRO TEMPORE
 GEORGE F. BOWMAN
 DAVID CARRINGTON
 T. JOE KNIGHT

1 Rainwater - should be used by people, plants and trees and should replenish groundwater with only a small portion making its way to our streams. If it runs off quickly, it is called stormwater runoff.
2 Rain Barrel - an easy to make container that saves rainwater for use during a dry period. This saves you money on your water bill and helps protect our water resources.
3 Impervious Surface - your driveway is an impervious surface along with the street and roof. This means that rainwater cannot make its way into the ground where it would water plants and replenish groundwater. Instead it runs off quickly to streams and creeks.
4 Rain Garden - an easy to plant garden that uses native plants to help clean stormwater runoff and allows it to replenish groundwater.
5 Groundwater - water that is found underground and supplies well water for our cities, farmers and families. It also provides the year-round flow for many streams and creeks.
6 Surface Water - water that is found in streams and rivers and provides water for our cities, industries and recreation. When rain occurs, water rushes from impervious surfaces picking up pollutants that are on the ground, carrying them straight to the creek or stream.

2017 STORMWATER CALENDAR

1 Rainwater - should be used by people, plants and trees and should replenish groundwater with only a small portion making its way to our streams. If it runs off quickly, it is called stormwater runoff.

2 Rain Barrel - an easy to make container that saves rainwater for use during a dry period. This saves you money on your water bill and helps protect our water resources.

3 Impervious Surface - your driveway is an impervious surface along with the street and roof. This means that rainwater cannot make its way into the ground where it would water plants and replenish groundwater. Instead it runs off quickly to streams and creeks.

4 Rain Garden - an easy to plant garden that uses native plants to help clean stormwater runoff and allows it to replenish groundwater.

5 Groundwater - water that is found underground and supplies well water for our cities, farmers and families. It also provides the year-round flow for many streams and creeks.

6 Surface Water - water that is found in streams and rivers and provides water for our cities, industries and recreation. When rain occurs, water rushes from impervious surfaces picking up pollutants that are on the ground, carrying them straight to the creek or stream.

IMAGE DESIGN CREDIT: ALABAMA RAIN BARREL PROJECT

The City of Birmingham and Jefferson County Stormwater Management Programs would like to thank all the partners who contributed to the 2017 Stormwater Calendar. We would like to send a special thanks to the Alabama Rain Barrel Project partners (Alabama Clean Water Partnership, Alabama Department Environmental Management, World Wildlife Fund, Coca Cola and Alabama Environmental Council) for allowing us use of their graphic for the front cover and back covers and Jennie Powers, working with Alabama Water Watch (AWW) at Auburn University, for use of the America's Amazon infographic she created displayed on this page.

The graphic chosen for the 2017 Stormwater Calendar promotes sustainable stormwater friendly practices – capturing and storing rainwater from the roof to reapply in the yard. This water conservation practice provides free irrigation and reduces polluted runoff because the rain that was captured would have otherwise flowed over a paved surface or lawn, picked up and carried items such as pet waste, lawn chemicals and trash, and drained untreated directly into our local creeks and rivers.

Each month the calendar highlights a pollutant and the negative effects that pollutant has on local water quality along with simple prevention strategies you can incorporate in your everyday life. These helpful tips will assist you to become a better steward of your community and watershed. We ask you to share these helpful tips with your neighbors, coworkers and family.

Did you know that Alabama has more than 132,000 miles of rivers and streams? You do now!

A newly created infographic (displayed to the right) was produced by the AWW IT assistant Jennie Powers for one of her classes at Auburn University. Jennie's infographic promotes Alabama's AWWsome aquatic biodiversity which ranks NUMBER 1 among all 50 states including freshwater fish, snails, mollusks, crayfish and turtles. The creation of this infographic initiated a greatly needed exchange among state agencies, universities and others about the estimates of our aquatic resources here in Alabama. This exchange resulted in the Geological Survey of Alabama conducting an updated GIS analysis of Alabama streams using the much-improved digital stream data, the USGS National Hydrography Dataset which contains much more detail than the previously used 1:100,000 scale data. In fact, the number of river miles increased about 55,000 miles - from more than 77,000 reported back in the 1990s to over 132,000 miles! This AWWsome infographic can be downloaded for free at: www.alabamawaterwatch.org/resources/publications.

GET INVOLVED!

Become a certified water quality monitor through the AWW Program. It is easy and FREE! You will learn how to evaluate physical, chemical and biological characteristics of your waterways by attending a FREE water chemistry, bacteriological or stream biomonitoring training workshop, or all three! Trainings are offered throughout the year, visit alabamawaterwatch.org to learn more.

AWW is a citizen volunteer water quality monitoring program covering all of the major river basins in Alabama. AWW uses EPA-approved monitoring plans with a community-based approach to train citizens to monitor conditions and trends in their local waterbodies.

America's Amazon

Alabama the Beautiful

10%

of the freshwater resources in the continental United States flow through or originate in Alabama.



14

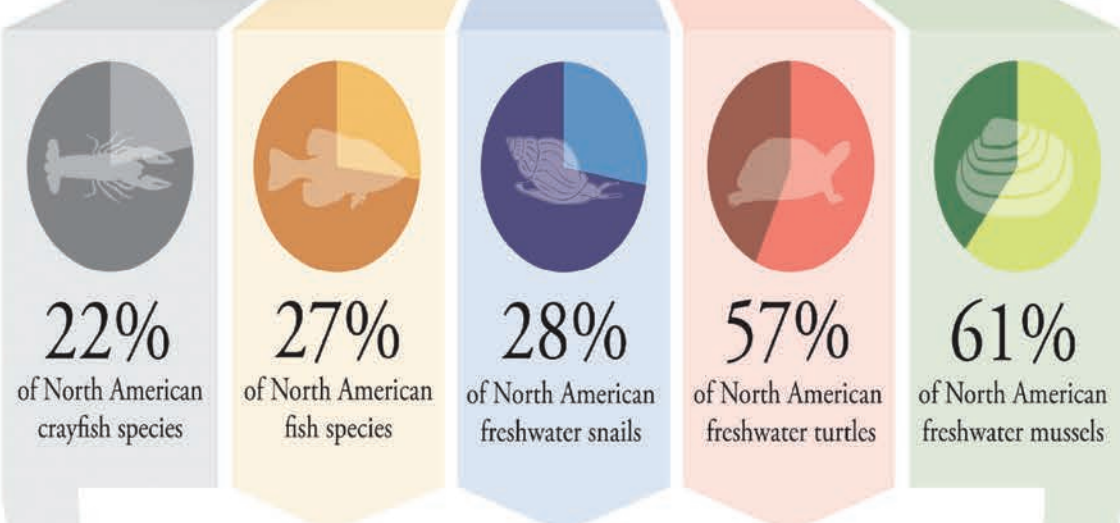
river basins form the waterways of Alabama

There are more than **132,000*** miles of rivers and streams in Alabama. That's enough to circle the earth 5 times!

Top 5 States

Freshwater Fish Biodiversity

Rank	State	# Species
1	Alabama	332*
2	Tennessee	320
3	Georgia	265
4	Kentucky	248
5	Mississippi	209



Native to Alabama

Alabama Ranks Number 1 in the U.S. for the number of freshwater crayfish, fish, snail, turtle and mussel species!



19% of the freshwater fish species in Alabama are at risk due to pollution and destruction of habitat.



Alabama Water Watch is a program in the Auburn University Water Resources Center, which receives support from the Alabama Agricultural Experiment Station and the Alabama Cooperative Extension System.

Get Involved!

Get certified as a water monitor and volunteer. Learn more at <http://alabamawaterwatch.org>

References:



Suggested Reading:

Fishes of Alabama by Herbert T. Boshchung and Richard L. Mayden
Southern Wonder: Alabama's Surprising Diversity by R. Scot Duncan



*Number of fish species and river/streams miles recently updated by GSA; river/streams miles updated using USGS National Hydrography Dataset (NHD) Base Revision for Alabama (see <https://www.usgs.gov/collections/data/nhd-base-revision-for-alabama>)

1 DROP MATTERS

REPAIR LEAKS, CLEANUP SPILLS

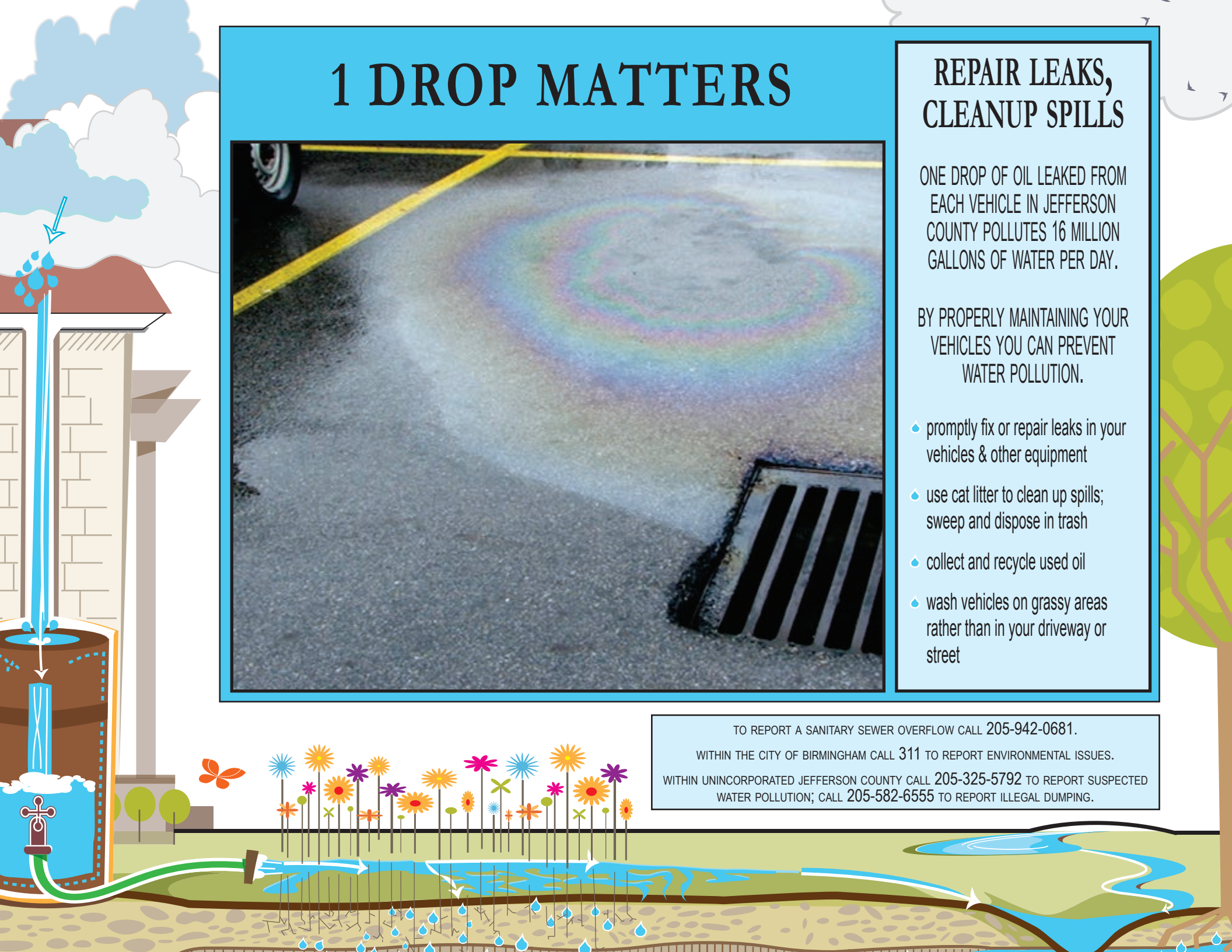
ONE DROP OF OIL LEAKED FROM EACH VEHICLE IN JEFFERSON COUNTY POLLUTES 16 MILLION GALLONS OF WATER PER DAY.

BY PROPERLY MAINTAINING YOUR VEHICLES YOU CAN PREVENT WATER POLLUTION.

- ◆ promptly fix or repair leaks in your vehicles & other equipment
- ◆ use cat litter to clean up spills; sweep and dispose in trash
- ◆ collect and recycle used oil
- ◆ wash vehicles on grassy areas rather than in your driveway or street



TO REPORT A SANITARY SEWER OVERFLOW CALL 205-942-0681.
 WITHIN THE CITY OF BIRMINGHAM CALL 311 TO REPORT ENVIRONMENTAL ISSUES.
 WITHIN UNINCORPORATED JEFFERSON COUNTY CALL 205-325-5792 TO REPORT SUSPECTED WATER POLLUTION; CALL 205-582-6555 TO REPORT ILLEGAL DUMPING.



JANUARY 2017

GET INVOLVED

MLK Service Day

For projects in Birmingham call 205-254-7771 or Jefferson County call 205-325-8741.

Many household products contain chemicals that should not be spilled or discarded where they could be washed into a storm drain. Only purchase what you need for the job and properly dispose of any leftovers. Visit aeonline.org to learn more.

Common pantry items like baking soda and vinegar easily can be used to make safe, inexpensive household cleaners. They are better for your health and the environment, help reduce the purchase of more toxic products, and cost less! There are many tips and recipes available online for making your own cleaning products.

SUNDAY	MONDAY	TUESDAY	WEDNESDAY	THURSDAY	FRIDAY	SATURDAY
1 <i>New Year's Day</i>	2	3	4	5	6	7
8	9	10	11	12	13	14
15	16 <i>Martin Luther King Jr. Day</i>	17	18	19	20	21
22	23	24	25	26	27	28
29	30	31				



TRASH BLOWS!



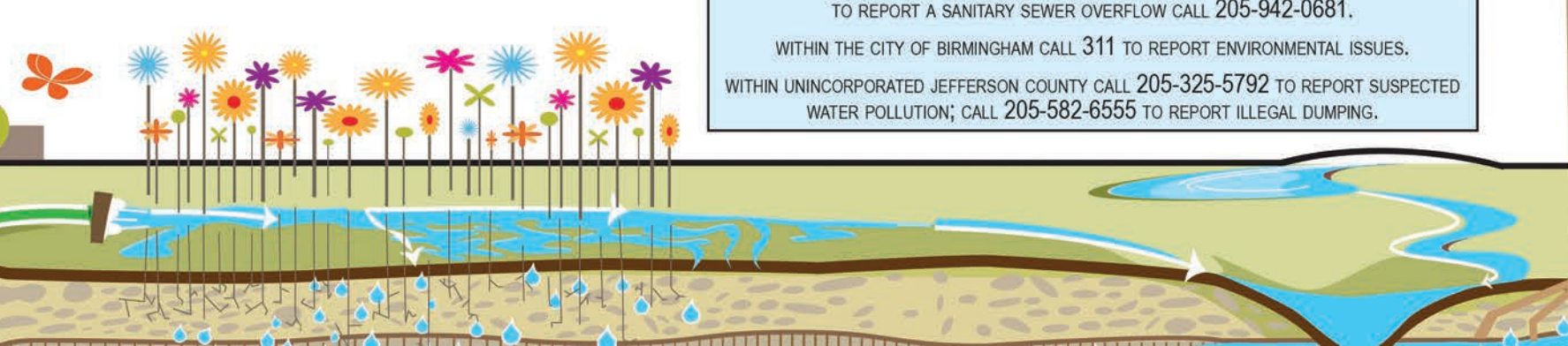
TARP AND TIE YOUR LOAD

INTENTIONAL OR NOT, TRASH AND OTHER ITEMS THAT BLOW OUT OF VEHICLES OR TRAILERS BECOME LITTER. LITTER POLLUTES OUR WATERWAYS.

BY PROPERLY TRANSPORTING AND DISPOSING OF TRASH, YOU CAN PREVENT WATER POLLUTION.

- cigarette butts are the most littered items, followed by bottles, cans, fast food packaging and plastic bags
- visit recycleAL.com to find facilities that will accept hard to dispose of items
- coordinate / participate in a roadside cleanup; call 325-8741 to learn more

TO REPORT A SANITARY SEWER OVERFLOW CALL 205-942-0681.
 WITHIN THE CITY OF BIRMINGHAM CALL 311 TO REPORT ENVIRONMENTAL ISSUES.
 WITHIN UNINCORPORATED JEFFERSON COUNTY CALL 205-325-5792 TO REPORT SUSPECTED WATER POLLUTION; CALL 205-582-6555 TO REPORT ILLEGAL DUMPING.



FEBRUARY 2017

GET INVOLVED

Annual Birmingham Plant Dig

Grab your garden tools, gloves and containers and head to the New Georgia Landfill 10 am - 2 pm to stock up on FREE plants for your yard. Sponsored by the Keep Birmingham Beautiful Commission, Alabama Forestry Commission, and Birmingham Public Works Department. Call 787-5222 to learn more.

Urban Forestry Fair

FREE tree seedling give away in Linn Park sponsored by Jefferson County Soil & Water Conservation District. Like us on Facebook www.facebook.com/jeffco-soilandwaterconservation or call 205-424-9990 ext. 101 for more information.

POWER-UP Energy Forum

Learn about solar power, other renewable energy sources, and energy efficiency. Visit www.aeonline.org for information.

SUNDAY	MONDAY	TUESDAY	WEDNESDAY	THURSDAY	FRIDAY	SATURDAY
			1	2 <i>Groundhog Day</i>	3	4
5	6	7	8	9	10	11
12	13	14 <i>Valentine's Day</i>	15	16	17	18
19	20 <i>Presidents' Day</i>	21	22	23	24	25
26	27	28				



“SPREAD” THE WORD!

TEST YOUR SOIL BEFORE YOU BUY

IT IS EASY TO APPLY TOO MUCH FERTILIZER WHEN YOU DO NOT KNOW WHAT YOU REALLY NEED. ANY EXCESS GETS WASHED OFF BY RAINFALL OR IRRIGATION AND POLLUTES OUR WATERWAYS.

BY APPLYING THE CORRECT PRODUCT IN APPROPRIATE AMOUNTS, YOU CAN PREVENT WATER POLLUTION.

- the quality of the soil is a major factor in how lush & green a garden grows
- call a master gardener volunteer 1-877-252-GROW #3 for all of your gardening challenges
- call the AL Extension's local plant diagnostic lab (205-879-6964 ext.19) to help identify pest & plant problems



1. PUT SOIL INTO BAG 2. MAIL AS INSTRUCTED 3. FOLLOW TEST RESULTS

You can pick up a free soil test kit from an Alabama Extension office and have your soil sample analyzed by Auburn University for \$7.00 (visit www.aces.edu publication ANR-6-A for more information). Or, you can purchase a soil test kit from your local lawn and garden center and analyze it yourself.

TO REPORT A SANITARY SEWER OVERFLOW CALL 205-942-0681.
 WITHIN THE CITY OF BIRMINGHAM CALL 311 TO REPORT ENVIRONMENTAL ISSUES.
 WITHIN UNINCORPORATED JEFFERSON COUNTY CALL 205-325-5792 TO REPORT SUSPECTED WATER POLLUTION; CALL 205-582-6555 TO REPORT ILLEGAL DUMPING.

MARCH 2017

GET INVOLVED

Japan-America Society of Alabama's Annual Cherry Blossom Festival

Japanese Gardens at the Birmingham Botanical Gardens. Free admission and parking. Visit www.bbgardens.org for more information.

Drug Take Back Program

Properly dispose of unwanted prescription and over the counter medications. Call your local law enforcement office or visit deadiversion.usdoj.gov/drug_disposal/takeback/index.html to find a location near you.

Household Hazardous Waste Day

McClendon Park at Legion Field. Visit www.aeonline.org for more information.

SUNDAY	MONDAY	TUESDAY	WEDNESDAY	THURSDAY	FRIDAY	SATURDAY
			1	2	3	4
5	6	7	8	9	10	11
12 <i>Daylight Savings Time Begins</i>	13	14	15	16	17 <i>St. Patrick's Day</i>	18
19	20	21	22 <i>World Water Day</i>	23	24	25
26	27	28	29	30	31	



“SPREAD” THE WORD!

FERTILIZE CORRECTLY

ANY EXCESS GETS WASHED OFF BY RAINFALL OR IRRIGATION AND POLLUTES OUR WATERWAYS. ALWAYS FOLLOW LABEL DIRECTIONS.

BY KEEPING FERTILIZER OFF OF PAVED AREAS, YOU CAN PREVENT WATER POLLUTION.

- ◆ set your spreader to the recommended application rate by adjusting its dial to the number specified in the package directions
- ◆ apply fertilizer when there is no chance of rain in the forecast
- ◆ sweep up any excess fertilizer that lands on paved areas
- ◆ the label is the LAW - use only the recommended amount



TO REPORT A SANITARY SEWER OVERFLOW CALL 205-942-0681.
 WITHIN THE CITY OF BIRMINGHAM CALL 311 TO REPORT ENVIRONMENTAL ISSUES.
 WITHIN UNINCORPORATED JEFFERSON COUNTY CALL 205-325-5792 TO REPORT SUSPECTED WATER POLLUTION; CALL 205-582-6555 TO REPORT ILLEGAL DUMPING.



APRIL 2017

GET INVOLVED

Spring Plant Sale
 Birmingham Botanical Gardens
 Visit www.bbgardens.org for more information.

Earth Day at the Gardens
 Birmingham Botanical Gardens. Free admission and parking.
 Visit www.bbgardens.org for more information.

Green Tie Affair
 Alabama Environmental Council's largest fundraising gala that includes live music, local food and beverages, silent and live auctions.
 Visit www.aeonline.org for more information.

Village Creek Spring Cleanup
 Visit www.villagecreeksociety.org for more information.

SUNDAY	MONDAY	TUESDAY	WEDNESDAY	THURSDAY	FRIDAY	SATURDAY
						1
2	3	4	5	6	7	8
9	10	11	12	13	14 Good Friday	15 Tax Day
16 Easter	17	18	19	20	21	22 Earth Day
23	24	25	26	27	28	29
30						



IN A PERFECT WORLD!

IT'S YOUR 'DOODY'

PET WASTE CONTAINS HARMFUL BACTERIA WHICH IS CARRIED BY RAINFALL INTO THE STORM DRAIN SYSTEM, POLLUTING OUR WATERWAYS.

PICKING UP PET WASTE IS NOT JUST A COURTESY, IT IS ALSO THE HEALTHY & ENVIRONMENTALLY SOUND THING TO DO.

- ◆ always pick up waste; bag it; trash it
- ◆ an average pile of dog waste contains 2.5 billion fecal coliform bacteria, plus viruses and parasites that can infect humans; placing waste in plastic bags generates heat killing these pathogens
- ◆ 150,000 dogs living in our area produce 38 tons of waste per day
- ◆ dog waste does not fertilize the grass & should never be added to compost



TO REPORT A SANITARY SEWER OVERFLOW CALL 205-942-0681.
 WITHIN THE CITY OF BIRMINGHAM CALL 311 TO REPORT ENVIRONMENTAL ISSUES.
 WITHIN UNINCORPORATED JEFFERSON COUNTY CALL 205-325-5792 TO REPORT SUSPECTED WATER POLLUTION; CALL 205-582-6555 TO REPORT ILLEGAL DUMPING.



MAY 2017

GET INVOLVED

Do Dah Day
 Rhodes and Caldwell Parks, Birmingham
 Come on out for this fun event which supports local animal charities. Visit www.dodahday.org for more information.

Lunch and Learn Series
 Birmingham Botanical Gardens, 11:30am-12:30pm
 Free and open to the public. No reservations are required; light refreshments served. For more information, visit www.bbagardens.org.

Bankhead Lake/Lower Valley Creek Cleanup
 For information about this and other opportunities to help clean up waterways throughout Jefferson County, visit www.renewourrivers.com

	SUNDAY	MONDAY	TUESDAY	WEDNESDAY	THURSDAY	FRIDAY	SATURDAY
		1	2	3	4	5	6
7		8	9	10	11	12	13
14 <i>Mother's Day</i>		15	16	17	18	19	20
21		22	23	24	25	26	27
28		29 <i>Memorial Day</i>	30	31			



“BEE” RESPONSIBLE!

PESTICIDES DON'T PICK AND CHOOSE

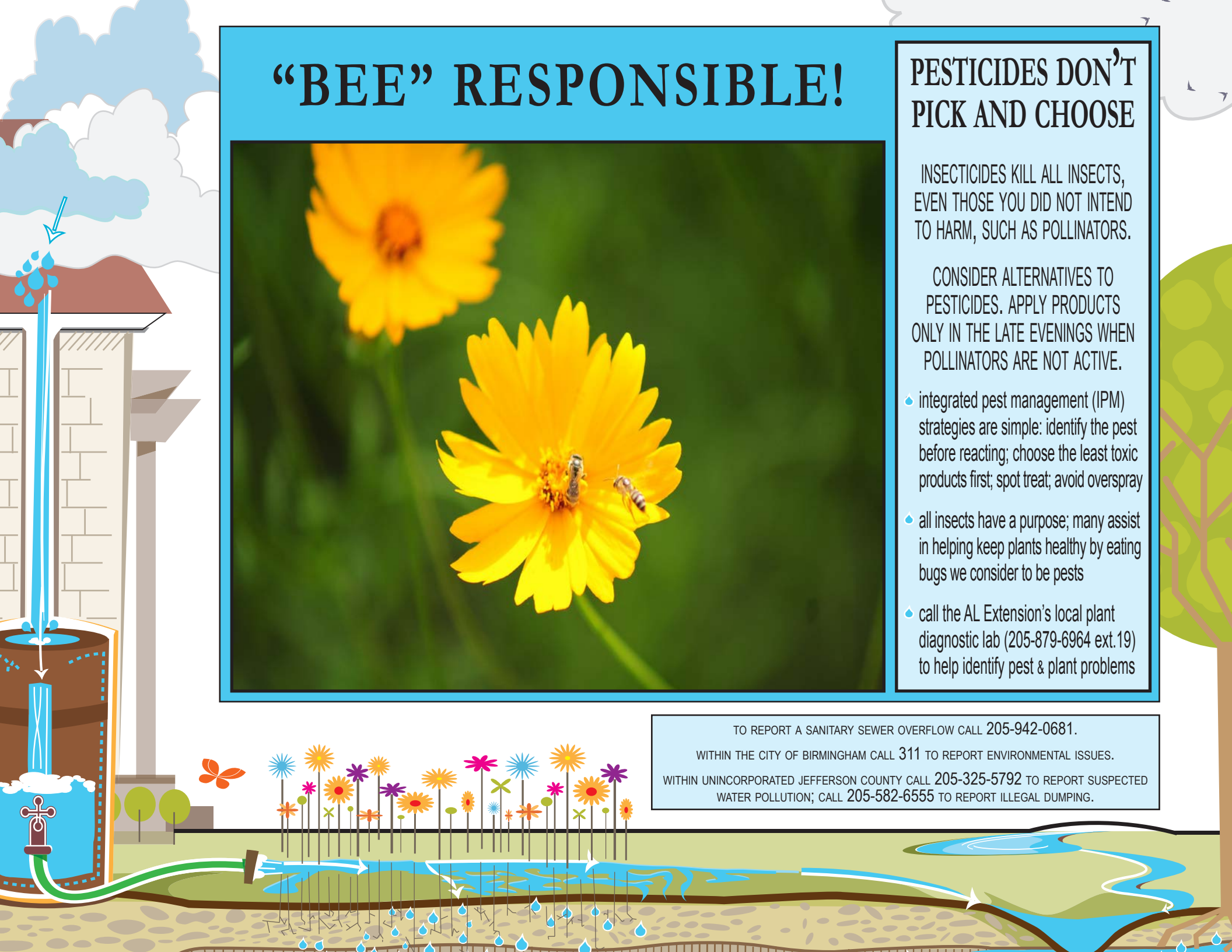
INSECTICIDES KILL ALL INSECTS, EVEN THOSE YOU DID NOT INTEND TO HARM, SUCH AS POLLINATORS.

CONSIDER ALTERNATIVES TO PESTICIDES. APPLY PRODUCTS ONLY IN THE LATE EVENINGS WHEN POLLINATORS ARE NOT ACTIVE.

- ◆ integrated pest management (IPM) strategies are simple: identify the pest before reacting; choose the least toxic products first; spot treat; avoid overspray
- ◆ all insects have a purpose; many assist in helping keep plants healthy by eating bugs we consider to be pests
- ◆ call the AL Extension's local plant diagnostic lab (205-879-6964 ext.19) to help identify pest & plant problems



TO REPORT A SANITARY SEWER OVERFLOW CALL 205-942-0681.
 WITHIN THE CITY OF BIRMINGHAM CALL 311 TO REPORT ENVIRONMENTAL ISSUES.
 WITHIN UNINCORPORATED JEFFERSON COUNTY CALL 205-325-5792 TO REPORT SUSPECTED WATER POLLUTION; CALL 205-582-6555 TO REPORT ILLEGAL DUMPING.



JUNE 2017

GET INVOLVED

Rain Barrel Workshop

Build your own or just learn from the experts the best way to install a rain barrel at your home. For more information, call the Alabama Extension Office 205-879-6964 ext. 10.

Lunch and Learn Series

Birmingham Botanical Gardens, 11:30am-12:30pm
 Free and open to the public. No reservations are required; light refreshments served. For more information, visit www.bbgardens.org.

Flicks Among the Flowers

Birmingham Botanical Gardens Visit www.bbgardens.org for more information.

National Pollinators Week

Birmingham Botanical Gardens Visit www.bbgardens.org for more information.

SUNDAY	MONDAY	TUESDAY	WEDNESDAY	THURSDAY	FRIDAY	SATURDAY
				1	2	3
4	5	6	7	8 <i>World Oceans Day</i>	9	10
11	12	13	14	15	16	17
18 <i>Father's Day</i>	19	20	21	22	23	24
25	26	27	28	29	30	



REDUCE RUNOFF!

WATER THE LAWN, NOT THE STREET

RUNOFF CARRIES LAWN PRODUCTS AND LOOSE SOIL TO OUR WATERWAYS CAUSING POLLUTION.

BY KEEPING WATER FROM LEAVING YOUR PROPERTY, YOU CAN PREVENT WATER RUNOFF & WATER POLLUTION.

- ◆ direct sprinklers and downspouts onto lawns, not driveways and sidewalks
- ◆ enhance water retention: aerate the lawn; amend the soil; add mulch
- ◆ add or reapply mulch to garden beds and natural areas to retain moisture; suppress weeds and reduce the frequency of watering
- ◆ develop deep root structures - water low & slow early morning / late evening



TO REPORT A SANITARY SEWER OVERFLOW CALL 205-942-0681.
 WITHIN THE CITY OF BIRMINGHAM CALL 311 TO REPORT ENVIRONMENTAL ISSUES.
 WITHIN UNINCORPORATED JEFFERSON COUNTY CALL 205-325-5792 TO REPORT SUSPECTED WATER POLLUTION; CALL 205-582-6555 TO REPORT ILLEGAL DUMPING.



JULY 2017

GET INVOLVED

Lunch and Learn Series
 Birmingham Botanical Gardens, 11:30am-12:30pm
 Free and open to the public. No reservations are required; light refreshments served. For more information, visit www.bbagardens.org.

Flicks Among the Flowers
 Birmingham Botanical Gardens.
 Visit www.bbgardens.org for more information.

Alabama Recycling Coalition Conference and Expo
 Alabama Environmental Council. Visit www.aconline.org for more information.

SUNDAY	MONDAY	TUESDAY	WEDNESDAY	THURSDAY	FRIDAY	SATURDAY
						1
2	3	4 Independence Day	5	6	7	8
9	10	11	12	13	14	15
16	17	18	19	20	21	22
23	24	25	26	27	28	29
30	31					



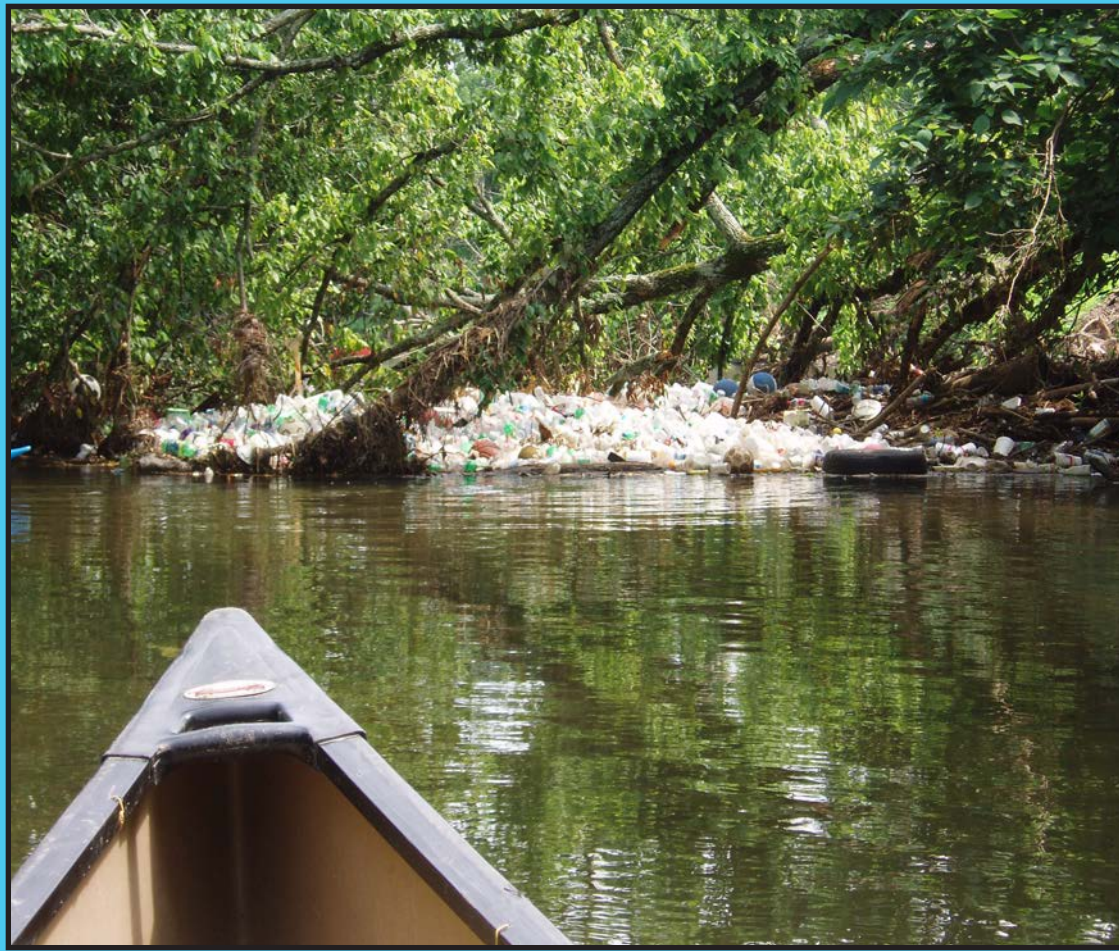
LITTER FLOATS!

ONLY TRASH LITTERS!

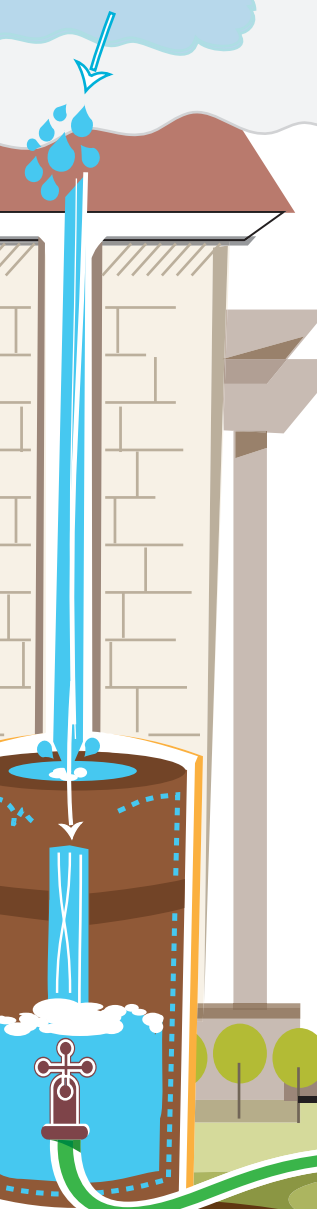
TRASH AND OTHER UNSECURED ITEMS THAT ARE THROWN OR BLOWN OUT OF VEHICLES BECOME LITTER. LITTER POLLUTES OUR WATERWAYS.

BY PROPERLY DISPOSING OF YOUR TRASH, YOU CAN PREVENT WATER POLLUTION.

- properly dispose of unused items in the trash and cover trash cans to keep out wind and animals
- participate in a creek cleanup, visit www.renewourrivers.com to learn more
- litter on the ground can be washed by rainwater into the storm drainage system and carried untreated to local creeks and streams



TO REPORT A SANITARY SEWER OVERFLOW CALL 205-942-0681.
 WITHIN THE CITY OF BIRMINGHAM CALL 311 TO REPORT ENVIRONMENTAL ISSUES.
 WITHIN UNINCORPORATED JEFFERSON COUNTY CALL 205-325-5792 TO REPORT SUSPECTED WATER POLLUTION; CALL 205-582-6555 TO REPORT ILLEGAL DUMPING.



AUGUST 2017

GET INVOLVED

National Night Out
 For information call the Jefferson County Sheriff's Office at 205-325-1450 or the City of Birmingham Police Department at 205-328-9311.

Lunch and Learn Series
 Birmingham Botanical Gardens. 11:30am-12:30pm Free and open to the public. No reservations are required; light refreshments served. For more information, visit www.bbagardens.org.

Valley Creek Cleanup
 Free t-shirt and lunch. Call 205-930-1274 or visit www.jcdh.org for more information.

Farm City Poster and Essay Contest
 Jefferson County Farmers Federation
 Call 205-477-7857 for more information.

SUNDAY	MONDAY	TUESDAY	WEDNESDAY	THURSDAY	FRIDAY	SATURDAY
		1	2	3	4	5
6	7	8	9	10	11	12
13	14	15	16	17	18	19
20	21	22	23	24	25	26
27	28	29	30	31		



IT'S "MULCH" BETTER!

FOOD VS. FLOOD

ONE LETTER CHANGES EVERYTHING. KEEP LEAVES OUT OF ROADWAYS, ROADSIDE DITCHES, & STORM DRAINS.



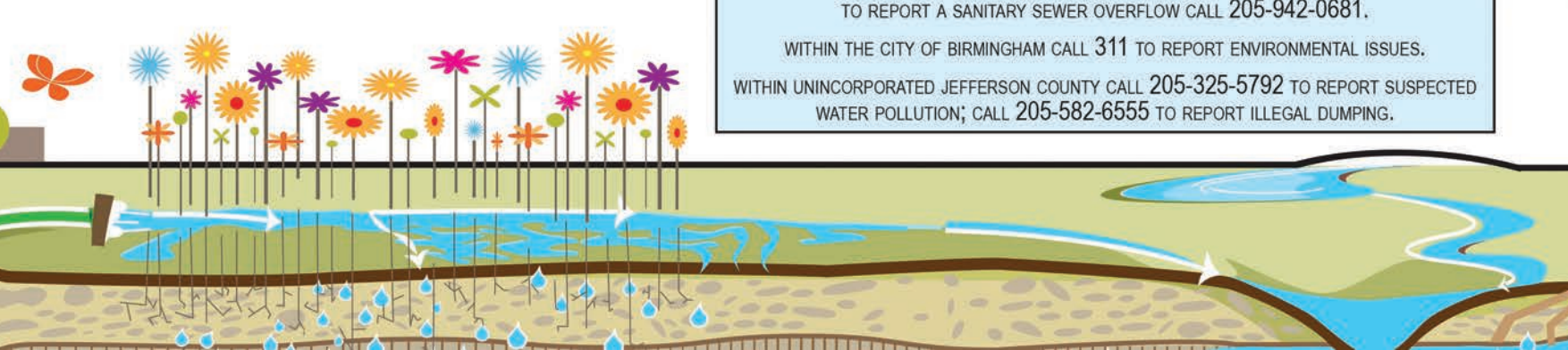
THIS AFFECTS YOU!

Leaves in roadways and roadside ditches block rain from entering storm drains causing flooding. Mulched leaves will decompose, supplying plants with a natural, slow release form of free nutrients.

THIS SAVES YOU MONEY!

- instead of piling your leaves or grass clippings on the curb, start looking at them as a valuable resource instead of a nuisance - use them as mulch or in a compost pile
- mulch enhances soil by supplying micronutrients, stabilizing soil temperature, retaining moisture and reducing weed growth
- reduce the amount of garbage your household generates by adding kitchen scraps to your compost pile (veggies, egg shells, coffee grounds)
- compost is ready to use when it looks & smells like rich, crumbly soil

TO REPORT A SANITARY SEWER OVERFLOW CALL 205-942-0681.
 WITHIN THE CITY OF BIRMINGHAM CALL 311 TO REPORT ENVIRONMENTAL ISSUES.
 WITHIN UNINCORPORATED JEFFERSON COUNTY CALL 205-325-5792 TO REPORT SUSPECTED WATER POLLUTION; CALL 205-582-6555 TO REPORT ILLEGAL DUMPING.



SEPTEMBER 2017

GET INVOLVED

Lunch and Learn Series

Birmingham Botanical Gardens, 11:30am-12:30pm
 Free and open to the public. No reservations are required; light refreshments served. For more information, visit www.bbagardens.org.

Pollution Prevention Week

Everything exposed to rain is a potential source of water pollution! What pollutants are lurking at your home?

SepticSmart Week

Leaking or improperly maintained septic tanks pollute our creeks and streams. Visit water.epa.gov/infrastructure/septic/septicSMART to learn what you can do.

Village Creek Fall Cleanup

Visit www.villagecreeksociety.org for more information.

SUNDAY	MONDAY	TUESDAY	WEDNESDAY	THURSDAY	FRIDAY	SATURDAY
					1	2
3	4 Labor Day	5	6	7	8	9
10	11	12	13	14	15	16
17	18 World Water Monitoring Day	19	20	21	22	23
24 World Rivers Day	25	26	27	28	29	30



IT'S "MULCH" BETTER!

LEAF MULCH MAKES FREE FOOD

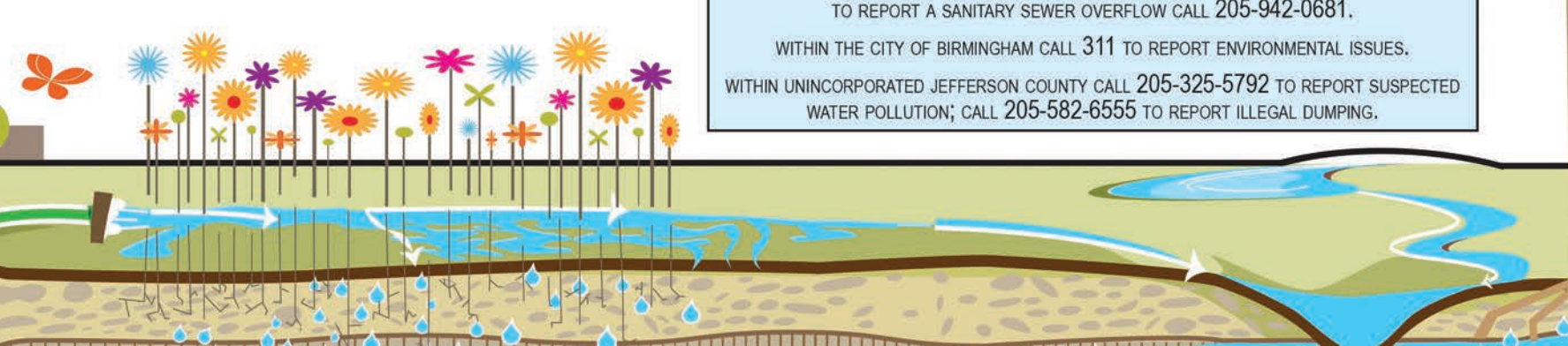


FALLEN LEAVES CONTAIN NUTRIENTS THAT PROVIDE FREE PLANT FOOD. MULCH SMOTHERS WEEDS, HELPS SOIL RETAIN MOISTURE, AND REDUCES SOIL EROSION.

BY RELYING ON NATURE TO FEED AND PROTECT YOUR LAWN AND GARDEN, YOU CAN PREVENT WATER POLLUTION.

- chop up fallen leaves with your lawnmower; leaf bits will decompose & provide free fertilizer
- winterize your plants and natural areas by applying your fallen leaves as mulch
- now is the best time to plant trees, shrubs & other additions to the landscape

TO REPORT A SANITARY SEWER OVERFLOW CALL 205-942-0681.
 WITHIN THE CITY OF BIRMINGHAM CALL 311 TO REPORT ENVIRONMENTAL ISSUES.
 WITHIN UNINCORPORATED JEFFERSON COUNTY CALL 205-325-5792 TO REPORT SUSPECTED WATER POLLUTION; CALL 205-582-6555 TO REPORT ILLEGAL DUMPING.



OCTOBER 2017

GET INVOLVED

Fall Plant Sale
 Birmingham Botanical Gardens. Visit www.bbgardens.org for more information.

Lunch and Learn Series
 Birmingham Botanical Gardens, 11:30am -12:30pm
 Free and open to the public. No reservations are required; light refreshments served. For more information, visit www.bbgardens.org.

Drug Take Back Program
 Properly dispose of unwanted prescription and over the counter medications. Call your local law enforcement office or visit deadiversion.usdoj.gov/drug_disposal/takeback/index.html to find a location near you.

SUNDAY	MONDAY	TUESDAY	WEDNESDAY	THURSDAY	FRIDAY	SATURDAY
1	2	3	4	5	6	7
8	9	10	11	12	13	14
15	16	17	18	19	20	21
22	23	24	25	26	27	28
29	30	31 Halloween				



1 DROP BUILDS UP!



1. COOK & COOL

2. POUR INTO CONTAINER

3. RETURN & EXCHANGE

New, clean recycling containers are available for FREE at all Jefferson County collection centers. Visit www.jeffcoes.org to find a location near you. Call 205-238-3876 for more information about Jefferson County's Household Cooking Oil and Grease Recycling Program.

CEASE THE GREASE

HOUSEHOLD COOKING OIL & GREASE CLOGS SINK DRAINS & SEWER PIPES. SAVE ON REPAIR COSTS BY RECYCLING THESE ITEMS FOR FREE.

BY PROPERLY DISPOSING OF YOUR USED COOKING OIL & GREASE, YOU CAN PREVENT WATER POLLUTION.

- scrape grease and food scraps from pans and dishes into the trash for disposal; use paper towels to remove excess oils before placing in wash water or dishwasher
- pouring any fats, oils, or grease down the drain clogs the pipes in your home and causes sanitary sewer overflows
- sanitary sewer overflows pollute streams and creeks with raw sewage which is unhealthy for people & the environment

TO REPORT A SANITARY SEWER OVERFLOW CALL 205-942-0681.
 WITHIN THE CITY OF BIRMINGHAM CALL 311 TO REPORT ENVIRONMENTAL ISSUES.
 WITHIN UNINCORPORATED JEFFERSON COUNTY CALL 205-325-5792 TO REPORT SUSPECTED WATER POLLUTION; CALL 205-582-6555 TO REPORT ILLEGAL DUMPING.

NOVEMBER 2017

GET INVOLVED

Grants Mill Road Cleanup Project
 Call Jefferson County Stormwater Management at 205-325-8741 for more information.

Recycling and Waste Reduction Summit
 Alabama Environmental Council
 Join recycling industry leaders for a day of best practices in recycling and waste reduction at home, work and school. Visit www.aeonline.org for more information.

Rain Barrel Workshop
 Is your holiday shopping list stressing you out? Consider building and gifting a rain barrel! Visit www.aeonline.org to register for a rain barrel class.

SUNDAY	MONDAY	TUESDAY	WEDNESDAY	THURSDAY	FRIDAY	SATURDAY
			1	2	3	4
5 <i>Daylight Savings Time ends</i>	6	7 <i>Election Day</i>	8	9	10	11 <i>Veterans Day</i>
12	13	14	15	16	17	18
19	20	21	22	23 <i>Thanksgiving Day</i>	24	25
26	27	28	29	30		



MMMM BACON!

YOU CREATED THE GUEST LIST



COOKING OIL & GREASE POURED ON THE GROUND INVITES UNWANTED GUESTS TO YOUR HOME & POLLUTES OUR LOCAL WATERWAYS.

BY PROPERLY DISPOSING OF YOUR USED COOKING OIL & GREASE, YOU CAN PREVENT WATER POLLUTION.

- there are better alternatives to weed control than pouring used oil and grease on the ground
- rats, raccoons, opossums and other vermin will feed on any type of grease, oil, or other food waste that you place uncovered outside your home
- Jefferson County offers free, convenient & easy household oil & grease recycling; call 205-238-3876 for more information

TO REPORT A SANITARY SEWER OVERFLOW CALL 205-942-0681.
 WITHIN THE CITY OF BIRMINGHAM CALL 311 TO REPORT ENVIRONMENTAL ISSUES.
 WITHIN UNINCORPORATED JEFFERSON COUNTY CALL 205-325-5792 TO REPORT SUSPECTED WATER POLLUTION; CALL 205-582-6555 TO REPORT ILLEGAL DUMPING.



DECEMBER 2017

GET INVOLVED

Free the Tree!

Don't doom your holiday tree to the landfill! Choose to extend the value of your cut tree and other greenery by recycling or repurposing it. Visit www.aeonline.org for recycling information and ideas.

Save Paper

Try wrapping your presents in a reusable shopping bag or other multi use item.

Turn off the Lights

Christmas tree lights left on for 10 hours a day over a period of 12 days produce enough CO2 to inflate 12 balloons.

Defrost your freezer before the Holidays

Your freezer will work more efficiently and you will create more space to store leftovers, thereby reducing food waste.

SUNDAY	MONDAY	TUESDAY	WEDNESDAY	THURSDAY	FRIDAY	SATURDAY
					1	2
3	4	5	6	7	8	9
10	11	12	13	14	15	16
17	18	19	20	21	22	23
24 Christmas Eve	25 Christmas Day	26	27	28	29	30
31 New Year's Eve						



Calendars

1200

Bee'r - 60 (SC Bee event)

McDonald Chapel - 35

Docena - 35

Minor heights (community & seniors) 35

Edgewater A (Lottie) 35

Edgewater B 45

friends of Botanical Garden 20

Alabama Water Watch 20

ASFA & water watch attendees
venia & Taylor 20

437
50 ACES

487

200 have on hand

287

200

487

285

* send calendar to all community contacts and include ^{NEWS} letter & cover letter 20

(2)

Jerry
Diane Gogans
Sherita Bitton / Viola
Jennifer Winkoltz
Courtner Gardner } +10

425

- NSGLH 35
- Daniel Ross sardis church 50
- Self creek 30
- Cotswolds (Bham?) 35
- communities: ~~35~~
- Forestdale (Marla Thomas) 35
- Mobile Junction (Katherine) 20
- Red Mtn Heights - 35
- Rock Mtn Lake (Brenda) 35
- Mulga Mine 30
- McAdony
- Rick 35
- Meekala Ortho 10
- Letson farms (directus)
- Adger fire Dept 20
- Keith Golden 20
- concord 35

Organizations

ACES 50	
NRCS	10
AEC	10

Bham

General Public & County Staff

?

200